

ShapeShift Standard Product Range

ShapeShell™-RC Planter Box



Bridging Creativity and Buildability

Over the past two decades, ShapeShift Technologies has built its reputation as the preferred partner for the world's leading architects, consultants, and Tier 1 builders, amassing a portfolio of over 320 landmark projects across 16 countries.

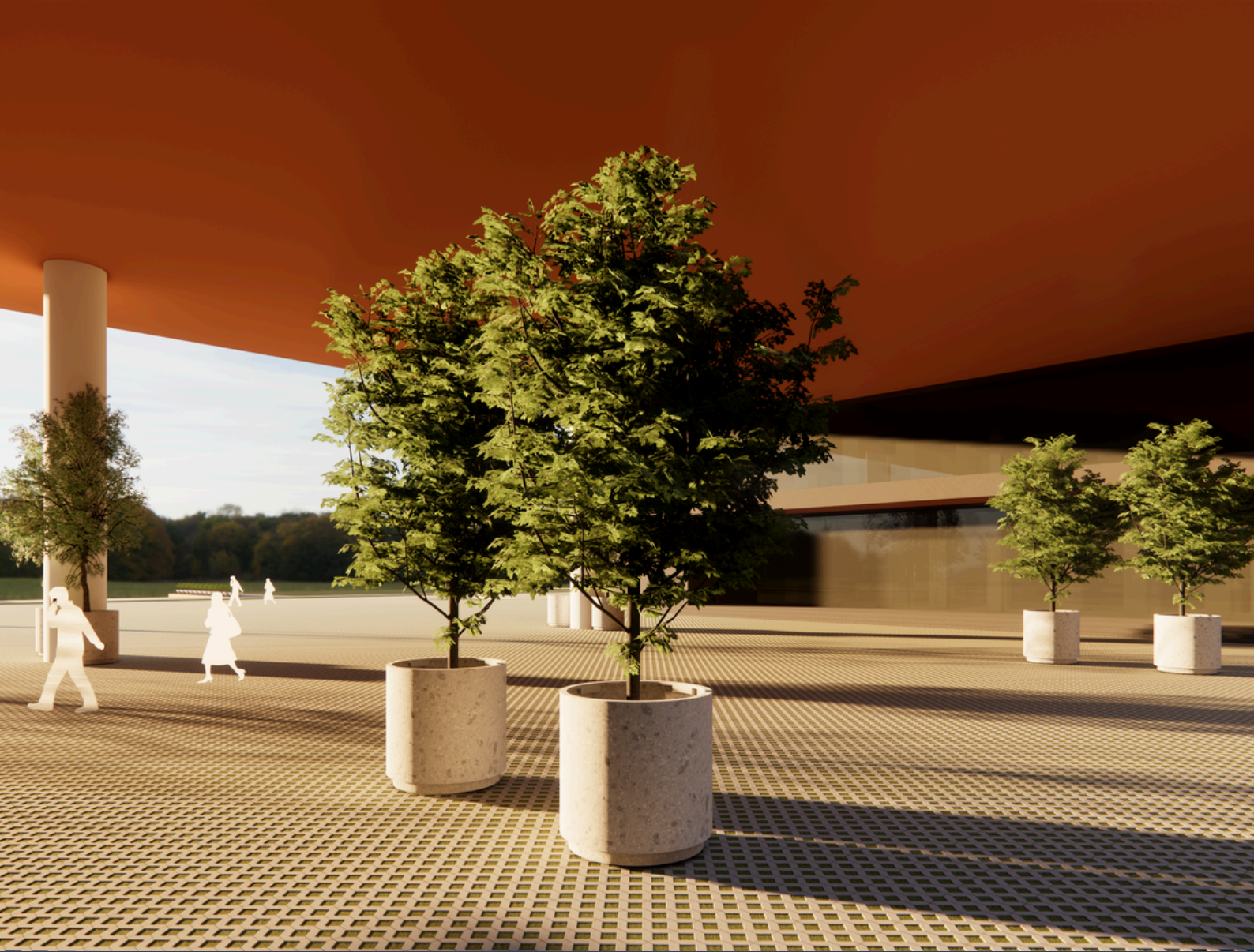
Through a vertically integrated design to manufacture process, ShapeShift delivers intelligent, sustainable, low-risk solutions by leveraging cutting-edge aerospace technology and precision manufacturing techniques at scale.



16 Countries



24 Years Experience



320
Projects

372.000 m²
Installed





ShapeShell™ by ShapeShift

Built for Real-World Performance



ShapeShell™-RC Planter Box

ShapeShift Technologies offers high-quality planter boxes crafted from Glassfibre Reinforced Concrete (GRC), designed to suit a variety of environments. These planters combine durability and aesthetic versatility, making them ideal for architectural and landscaping projects across public and private spaces.

ShapeShift Technologies products integrate seamlessly with existing designs, whether it's to improve the ambience of cafes and restaurants, define public seating areas in shopping centres, or align with branding needs at sports facilities. For temporary or event-based applications, our planters are also available as part of bundled rental packages that include soil, plants, and irrigation systems.

These planter boxes represent a balance of form and function, enhancing spaces while being mindful of long-term maintenance and sustainability.

ShapeShell™ RC

Planter Box Usability

Commercial Property Developers

Aesthetic and versatile planter solutions that integrate seamlessly with diverse architectural styles. Durable and customisable designs that enhance the visual and functional appeal of both indoor and outdoor spaces.

Local Councils and Public Spaces

Durable planters for streetscapes, parks, and other public spaces. Weather-resistant solutions that improve urban aesthetics and reduce long-term maintenance costs.

Sport Facilities

Planters for creating aesthetically pleasing entryways and communal zones in stadiums and arenas. Durable solutions that align with the facility's branding and withstand high foot traffic.

Hotels and Resorts

Luxurious landscaping elements for entrances, gardens, and pool areas. Enhances the serene atmosphere and provides long-lasting durability in outdoor environments.





Cafés and Restaurants

Planters that create cosy outdoor dining areas or enhance interior décor. Improves ambience and customer experience while maintaining an easy-to-clean design.

Corporate Campuses

Landscaping for outdoor courtyards, seating areas, and entrances. Creates relaxing and productive environments for employees and visitors.

Educational Institutions

Durable planters for campuses and communal areas. Adds greenery to learning environments, creating an inviting atmosphere.

Shopping Centres

Planters for atriums, walkways, and public seating areas. Improves customer flow and adds greenery to otherwise sterile retail environments.

Hospitals and Medical Centres

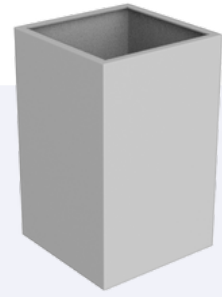
Planters for healing gardens and tranquil courtyards. Enhances patient recovery spaces with biophilic elements.

Rental Companies

Bundled offerings for short-term and long-term hire of planters, soil, plants, and irrigation systems. Ready-to-use solutions for events, corporate spaces, and temporary installations.

ShapeShell™

Square Planters



Small

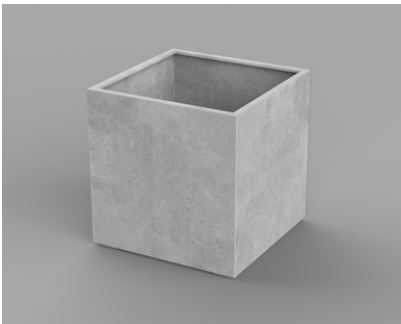
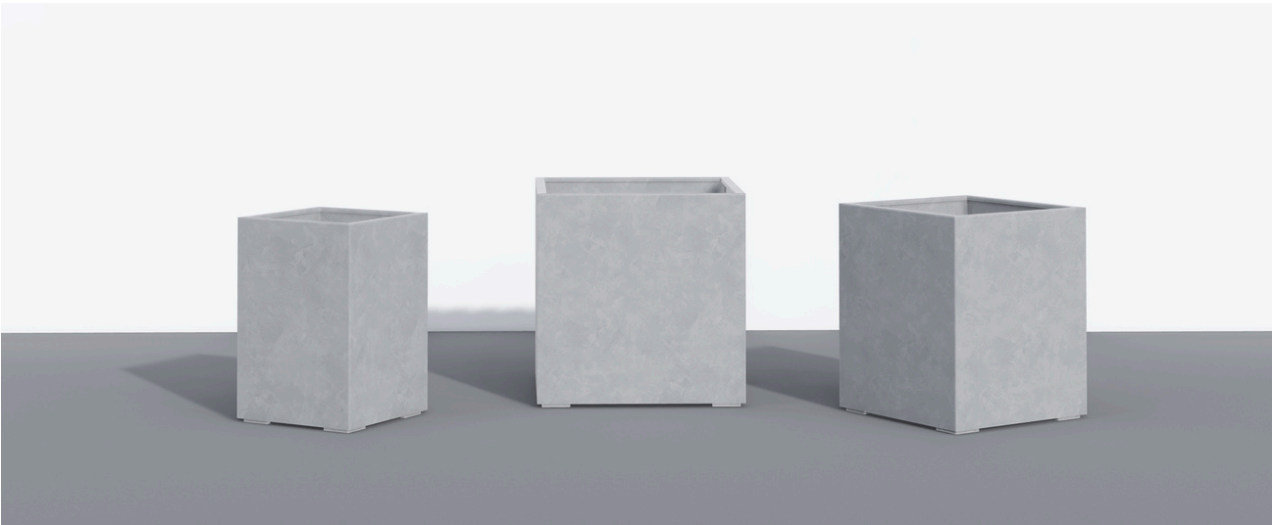
- Length : 700 mm
- Width : 700 mm
- Height : 1,020 mm
- Weight : 135 kg

Medium

- Length : 900 mm
- Width : 900 mm
- Height : 1,060 mm
- Weight : 202.5 kg

Large

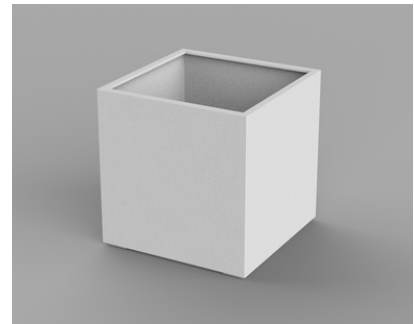
- Length : 1,110 mm
- Width : 1,110 mm
- Height : 1,110 mm
- Weight : 247.5 kg



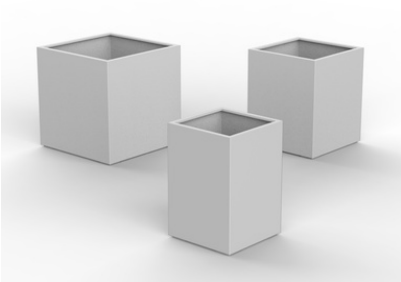
Grey Colour



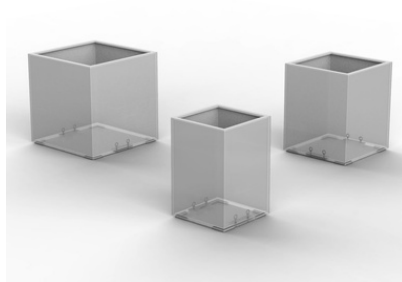
Sandstone Colour



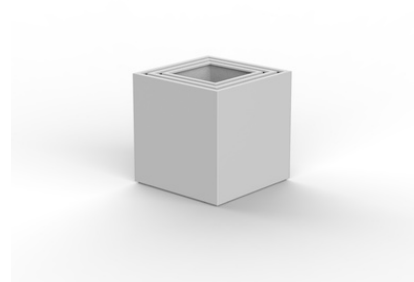
White Colour



Available in 3 Sizes



Include Lifting Points



Nested Feature

ShapeShell™

Rectangle Planters

Small

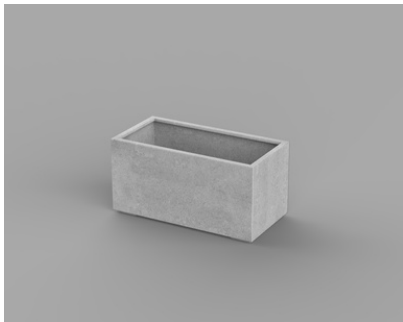
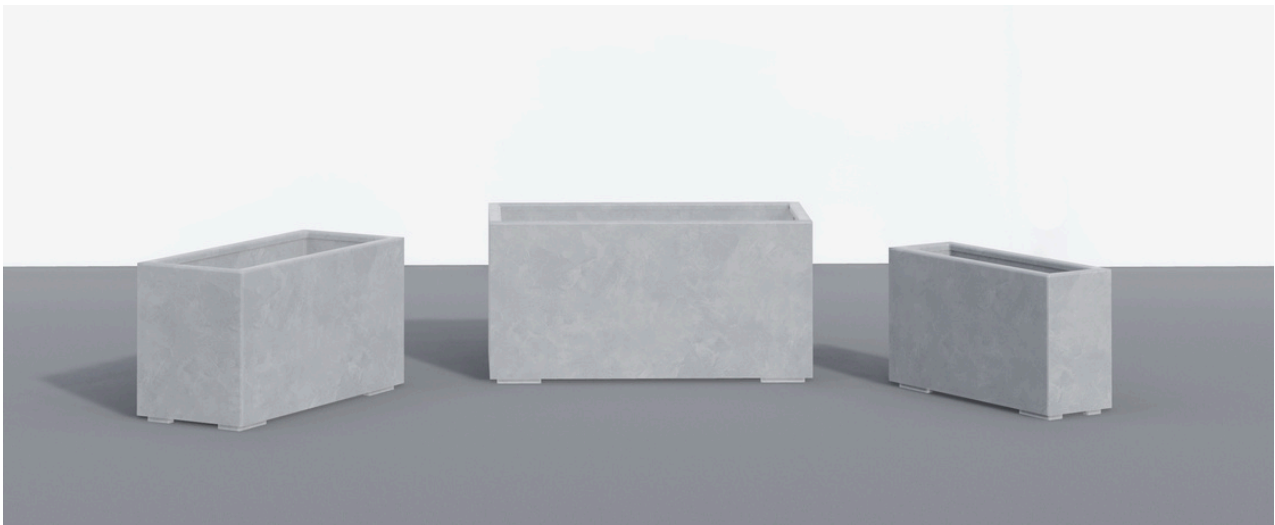
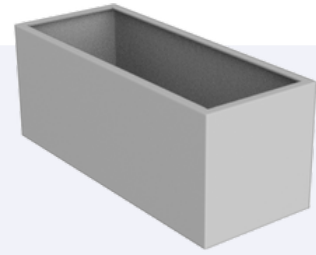
- Length : 820 mm
- Width : 270 mm
- Height : 450 mm
- Weight : 45 kg

Medium

- Length : 960 mm
- Width : 410 mm
- Height : 490 mm
- Weight : 67.5 m

Large

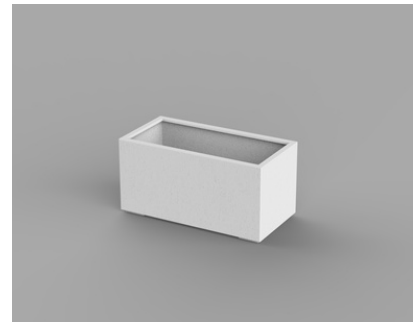
- Length : 1,110 mm
- Width : 550 mm
- Height : 530 mm
- Weight : 90 kg



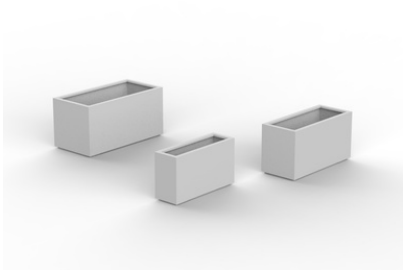
Grey Colour



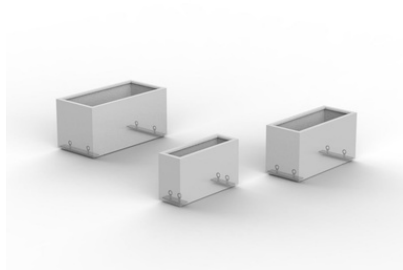
Sandstone Colour



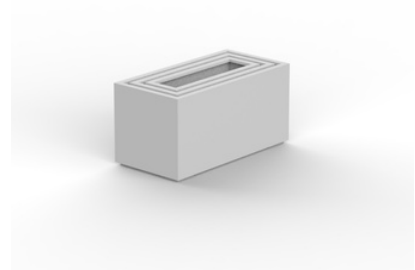
White Colour



Available in 3 Sizes



Include Lifting Points



Nested Feature

ShapeShell™

Curved Edge Planters

Small

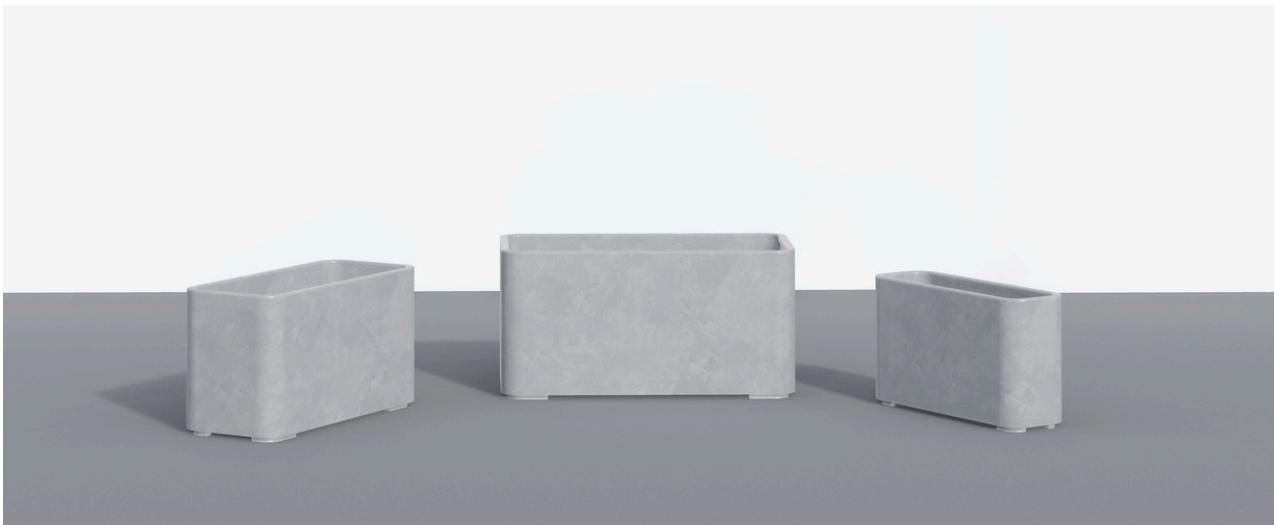
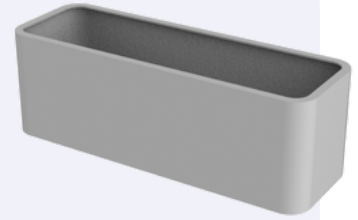
- Length : 820 mm
- Width : 270 mm
- Height : 450 mm
- Weight : 45 kg

Medium

- Length : 960 mm
- Width : 410 mm
- Height : 490 mm
- Weight : 67.5 m

Large

- Length : 1,110 mm
- Width : 550 mm
- Height : 530 mm
- Weight : 90 kg



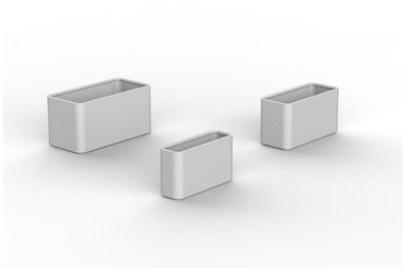
Grey Colour



Sandstone Colour



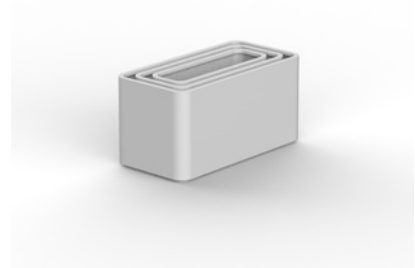
White Colour



Available in 3 Sizes



Include Lifting Points



Nested Feature

ShapeShell™
Wave Planters

Small

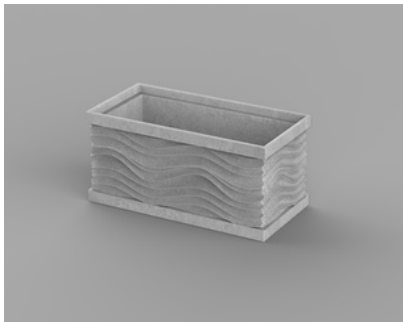
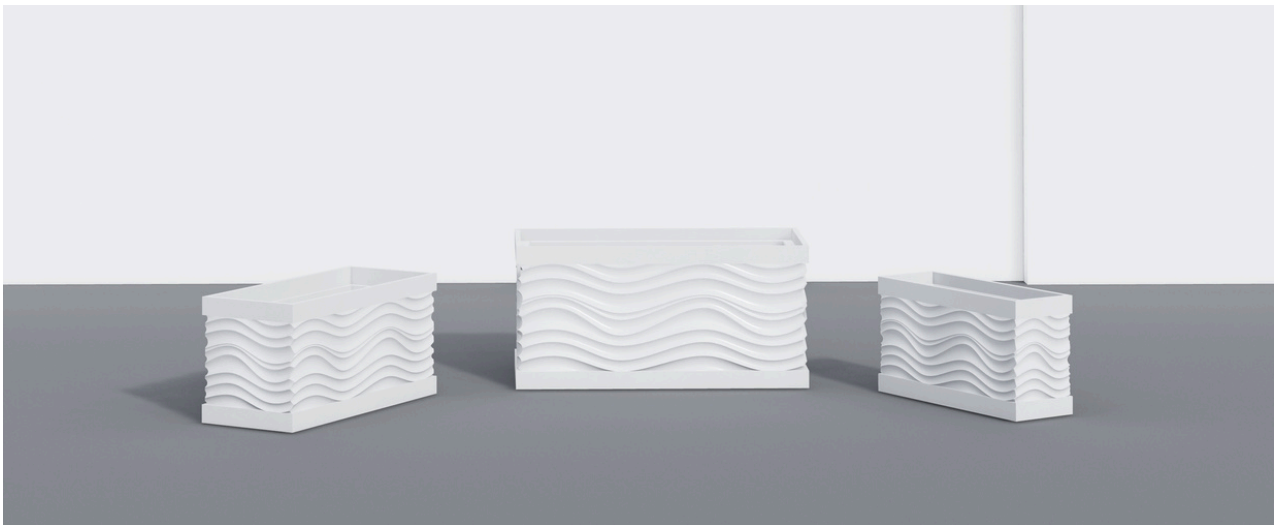
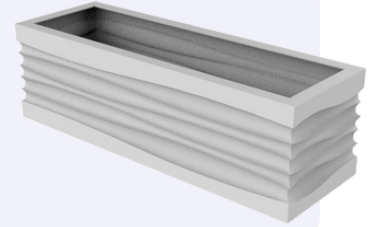
- Length : 780 mm
- Width : 270 mm
- Height : 425 mm
- Weight : 45 kg

Medium

- Length : 940 mm
- Width : 390 mm
- Height : 445 mm
- Weight : 67.5 m

Large

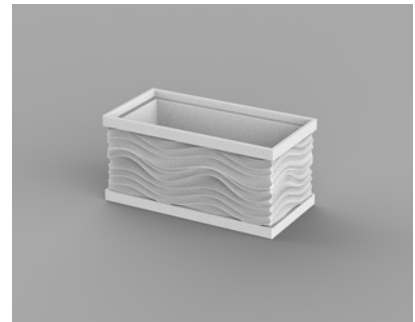
- Length : 1,110 mm
- Width : 550 mm
- Height : 530 mm
- Weight : 157.5 kg



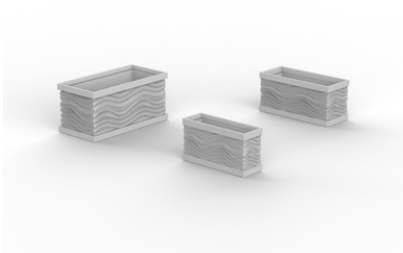
Grey Colour



Sandstone Colour



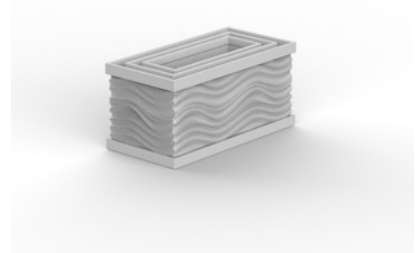
White Colour



Available in 3 Sizes



Include Lifting Points



Nested Feature

ShapeShell™

Tapered Top Planters

Small

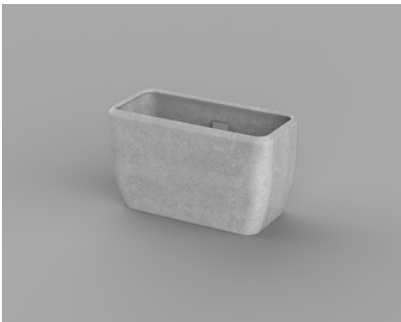
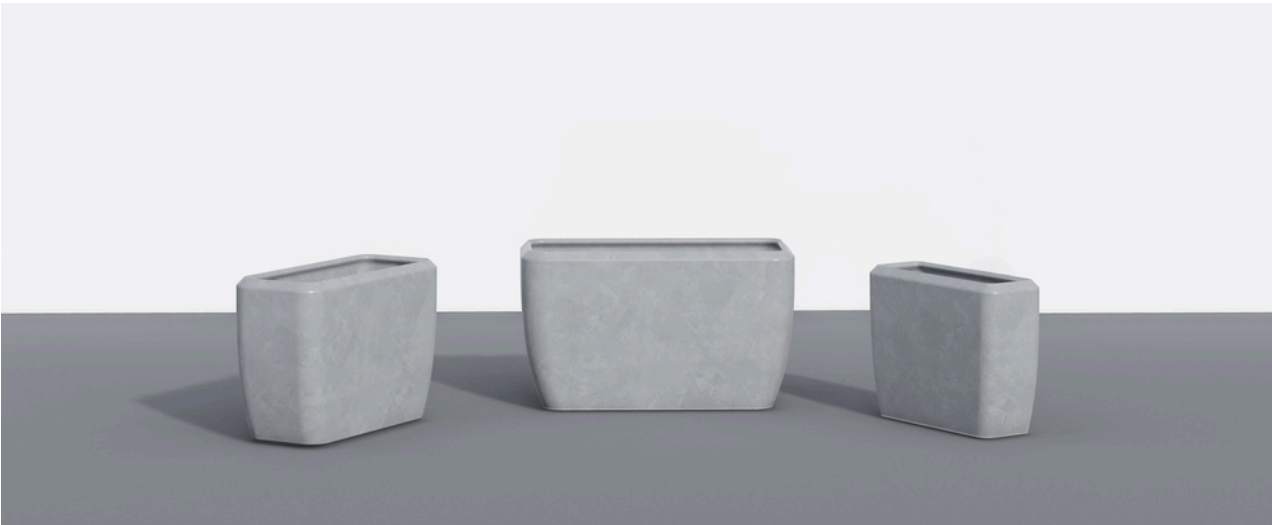
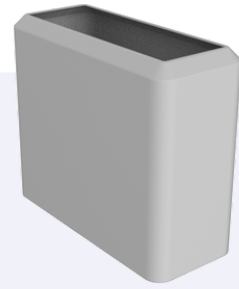
- Length : 820 mm
- Width : 270 mm
- Height : 450 mm
- Weight : 45 kg

Medium

- Length : 960 mm
- Width : 410 mm
- Height : 490 mm
- Weight : 67.5 m

Large

- Length : 1,110 mm
- Width : 550 mm
- Height : 530 mm
- Weight : 90 kg



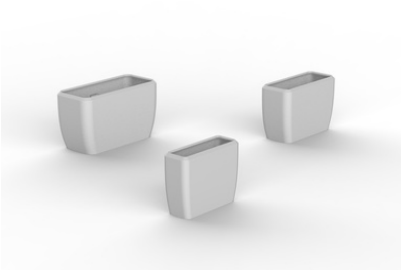
Grey Colour



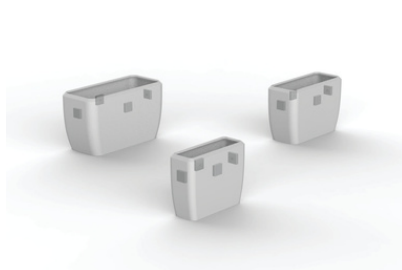
Sandstone Colour



White Colour



Available in 3 Sizes



Include Lifting Points



Nested Feature

ShapeShell™ Urban Planters

Small

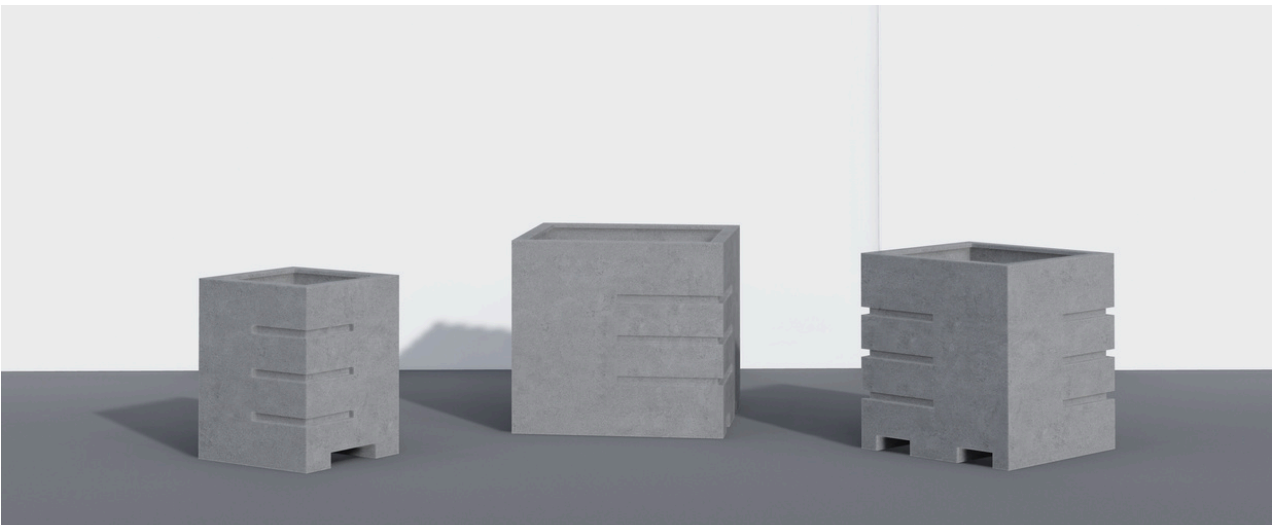
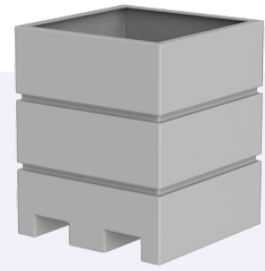
- Length : 700 mm
- Width : 700 mm
- Height : 885 mm
- Weight : 135 kg

Medium

- Length : 900 mm
- Width : 900 mm
- Height : 980 mm
- Weight : 202.5 kg

Large

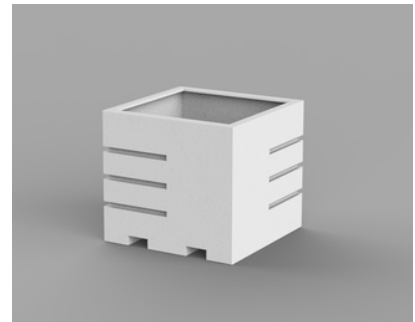
- Length : 1,110 mm
- Width : 1,100 mm
- Height : 1,000 mm
- Weight : 270 kg



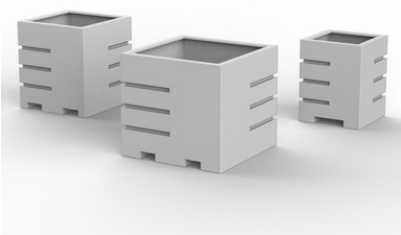
Grey Colour



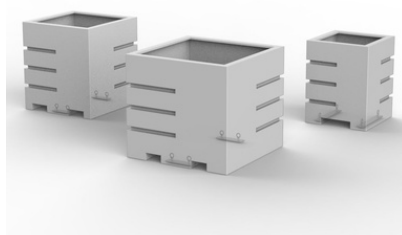
Sandstone Colour



White Colour



Available in 3 Sizes



Include Lifting Points



Nested Feature

ShapeShell™ U Planters

Small

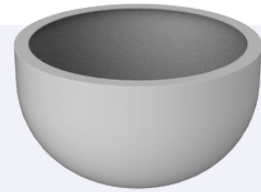
- Diameter : Ø 600 mm
- Height : 781 mm
- Weight : 67.5 kg

Medium

- Diameter : Ø 850 mm
- Height : 821 mm
- Weight : 90 kg

Large

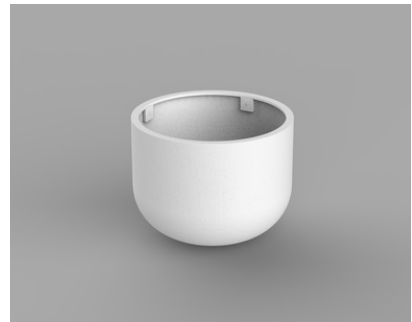
- Diameter : Ø 1,100 mm
- Height : 862 mm
- Weight : 135 kg



Grey Colour



Sandstone Colour



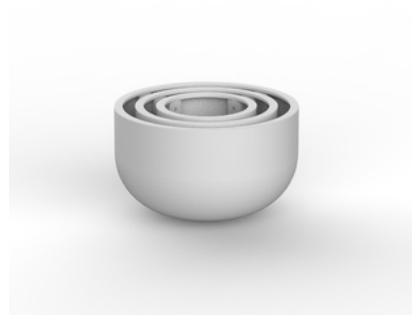
White Colour



Available in 3 Sizes



Include Lifting Points



Nested Feature

ShapeShell™ Bowl Planters

Small

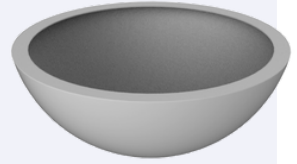
- Diameter : Ø 825 mm
- Height : 362 mm
- Weight : 22.5 kg

Medium

- Diameter : Ø 962 mm
- Height : 402 mm
- Weight : 45 kg

Large

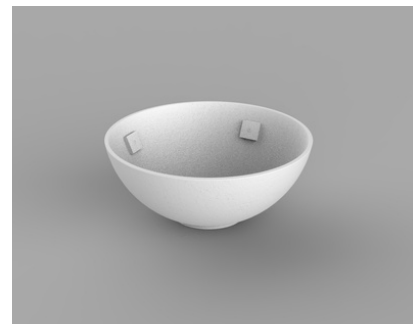
- Diameter : Ø 1,100 mm
- Height : 442 mm
- Weight : 67.5 kg



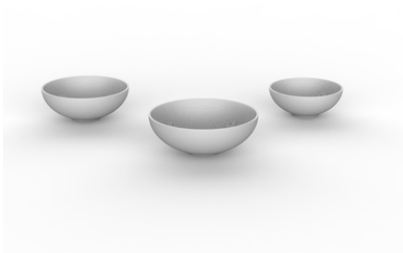
Grey Colour



Sandstone Colour



White Colour



Available in 3 Sizes



Include Lifting Points



Nested Feature

ShapeShell™

Large Bowl Planters

Small

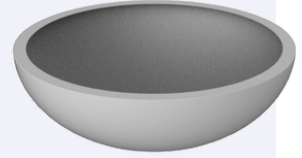
- Diameter : Ø 820 mm
- Height : 314 mm
- Weight : 22.5 kg

Medium

- Diameter : Ø 960 mm
- Height : 354 mm
- Weight : 45 kg

Large

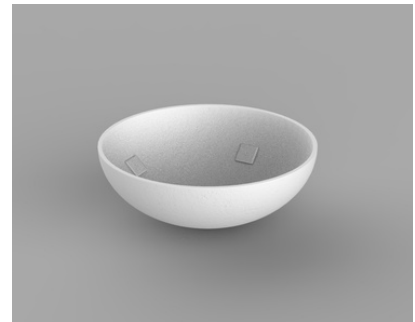
- Diameter : Ø 1,100 mm
- Height : 395 mm
- Weight : 67.5 kg



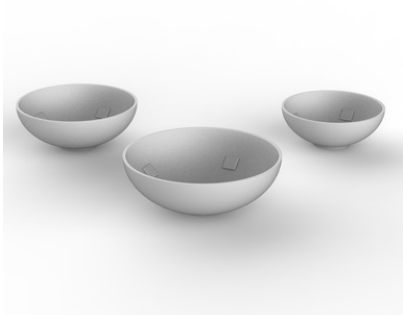
Grey Colour



Sandstone Colour



White Colour



Available in 3 Sizes



Include Lifting Points



Nested Feature

ShapeShell™

Flower Pot Planters



Small

- Diameter : Ø 825 mm
- Height : 362 mm
- Weight : 22.5 kg

Medium

- Diameter : Ø 962 mm
- Height : 402 mm
- Weight : 45 kg

Large

- Diameter : Ø 1,100 mm
- Height : 442 mm
- Weight : 67.5 kg



Grey Colour



Sandstone Colour



White Colour



Available in 3 Sizes



Include Lifting Points



Nested Feature

ShapeShell™

Large Textured Feature Planters

Small

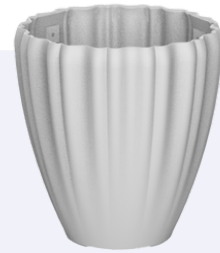
- Diameter : Ø 729 mm
- Height : 1,156 mm
- Weight : 90 kg

Medium

- Diameter : Ø 980 mm
- Height : 1,150 mm
- Weight : 112.5 kg

Large

- Diameter : Ø 1,100 mm
- Height : 1,100 mm
- Weight : 135 kg



Grey Colour



Sandstone Colour



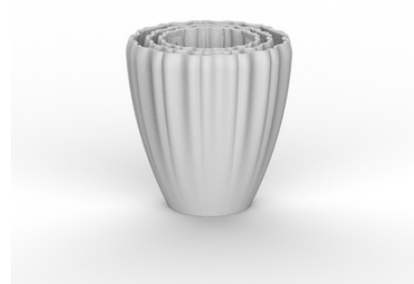
White Colour



Available in 3 Sizes



Include Lifting Points



Nested Feature

ShapeShell™ Cylinder Planters

Small

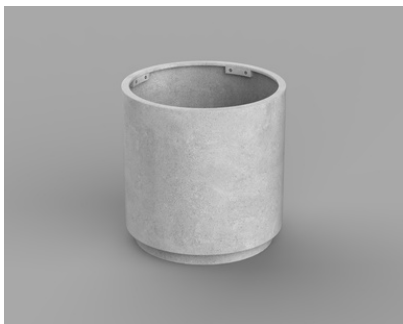
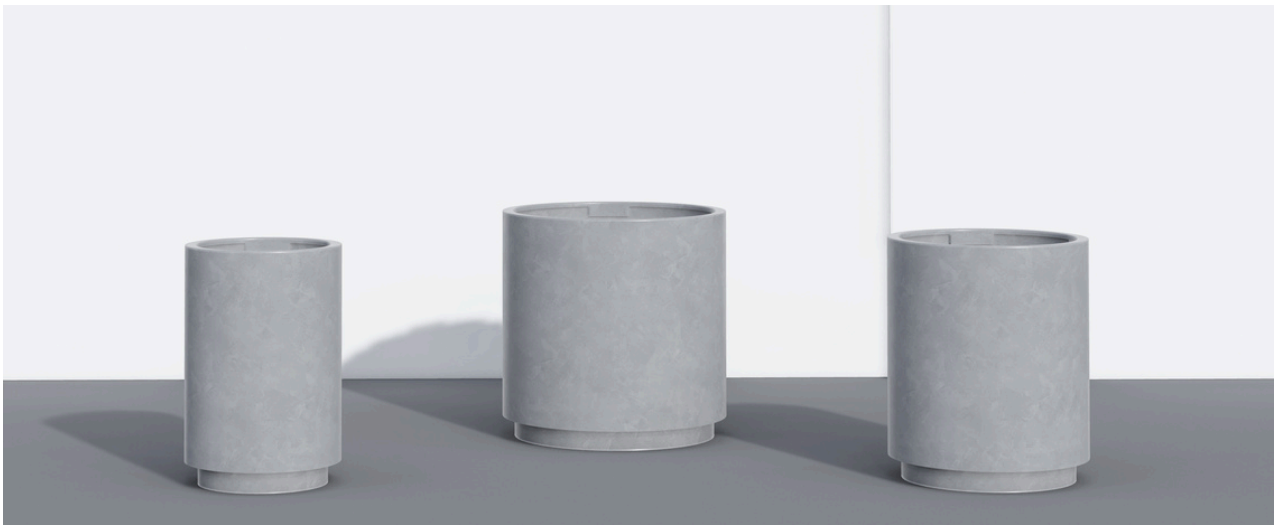
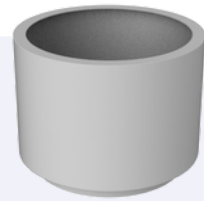
- Diameter : Ø 700 mm
- Height : 700 mm
- Weight : 67.5 kg

Medium

- Diameter : Ø 900 mm
- Height : 900 mm
- Weight : 157.5 kg

Large

- Diameter : Ø 1,100 mm
- Height : 1,100 mm
- Weight : 202.5 kg



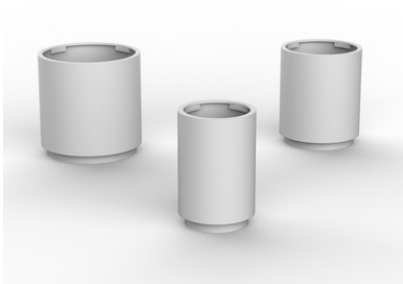
Grey Colour



Sandstone Colour



White Colour



Available in 3 Sizes



Include Lifting Points



Nested Feature

ShapeShell™

Large Classic Feature Planters



Small

- Diameter : Ø 790 mm
- Height : 960 mm
- Weight : 90 kg

Medium

- Diameter : Ø 950 mm
- Height : 1,030 mm
- Weight : 135 kg

Large

- Diameter : Ø 1,100 mm
- Height : 1,100 mm
- Weight : 157.5 kg



Grey Colour



Sandstone Colour



White Colour



Available in 3 Sizes



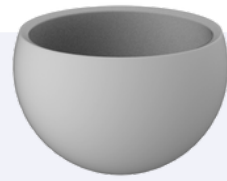
Include Lifting Points



Nested Feature

ShapeShell™

Large Modern Feature Planters



Small

- Diameter : Ø 820 mm
- Height : 652 mm
- Weight : 67.5 kg

Medium

- Diameter : Ø 960 mm
- Height : 692 mm
- Weight : 90 kg

Large

- Diameter : Ø 1,100 mm
- Height : 730 mm
- Weight : 112.5 kg



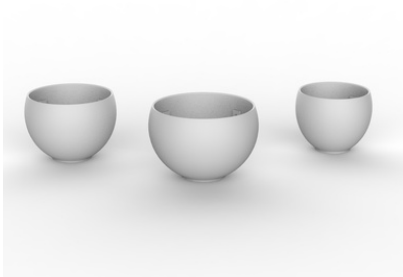
Grey Colour



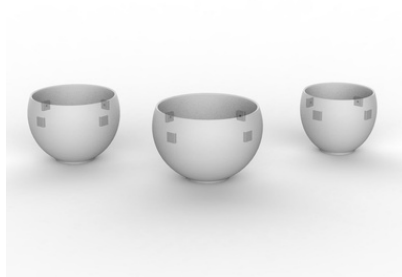
Sandstone Colour



White Colour



Available in 3 Sizes



Include Lifting Points

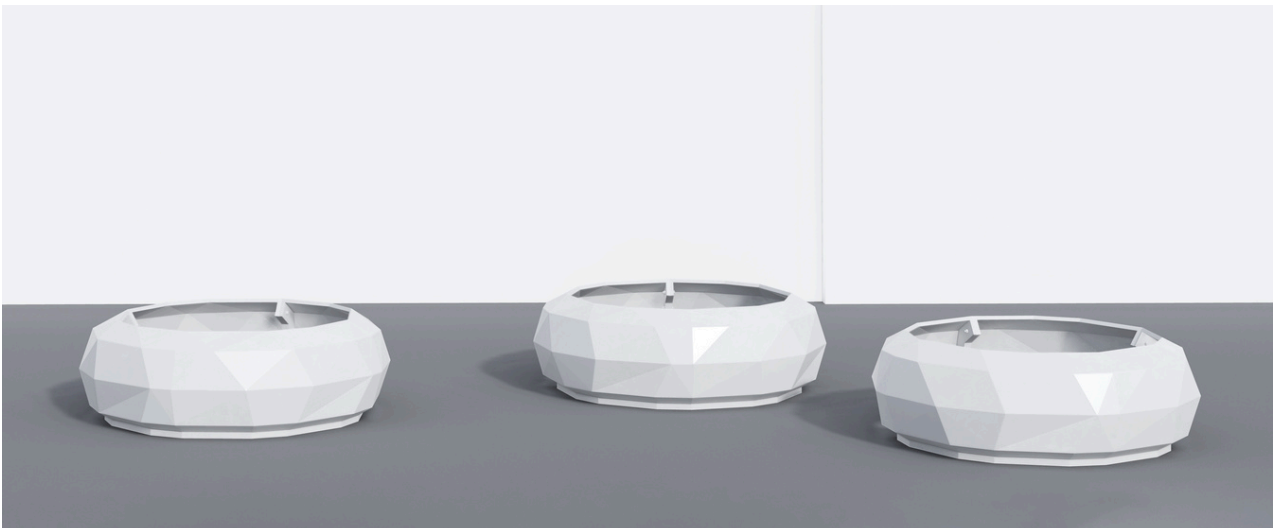
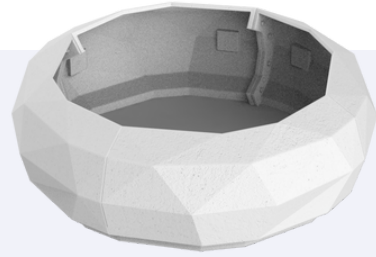


Nested Feature

ShapeShell™

Decorative Tree Surround Planter

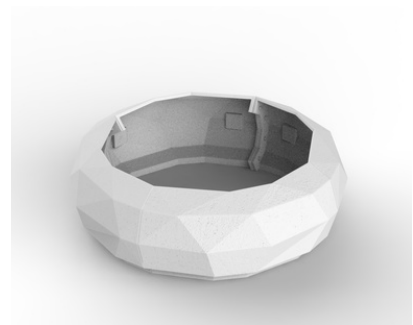
- Diameter : Ø 1,100 mm
- Height : 608 mm
- Weight : 135 kg



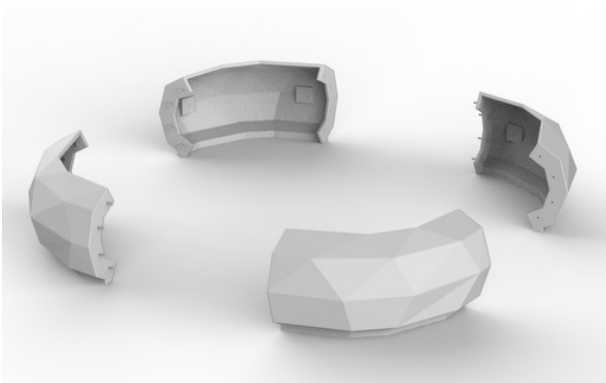
Grey Colour



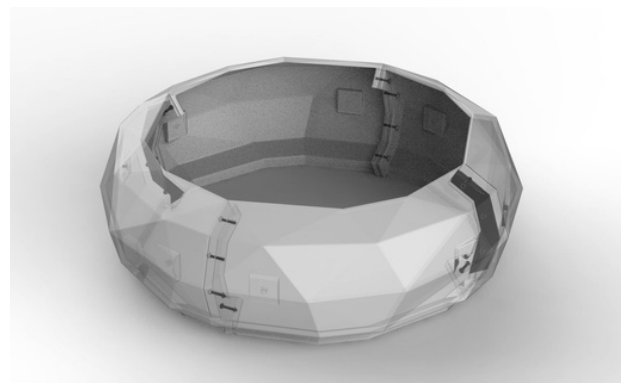
Sandstone Colour



White Colour



Exploda View

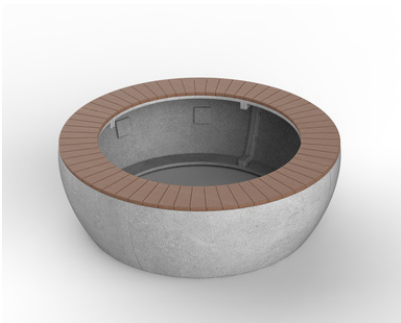
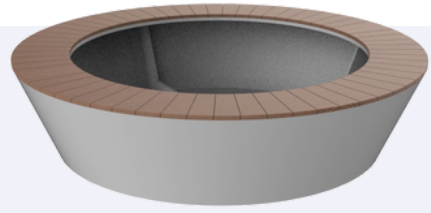


Include Lifting Points

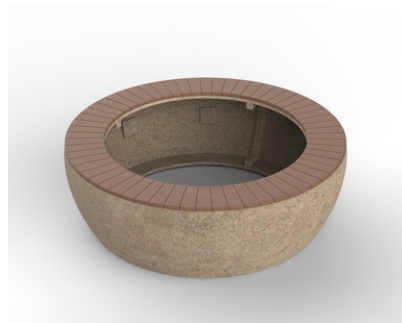
ShapeShell™

Sitting Tree Surround Planter

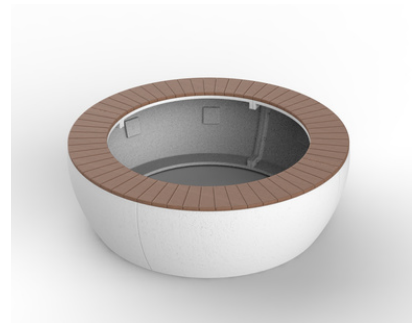
- Diameter : Ø 1,100 mm
- Height : 468 mm
- Weight : 90 kg



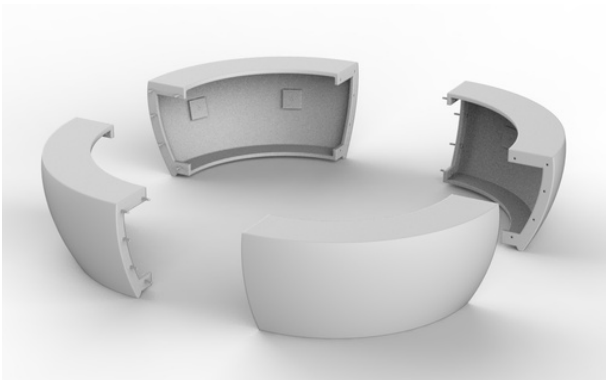
Grey Colour



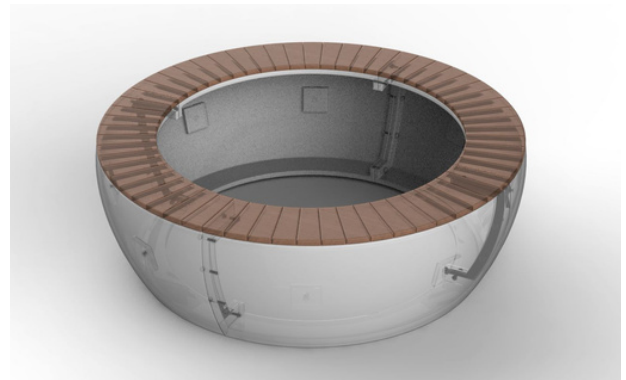
Sandstone Colour



White Colour

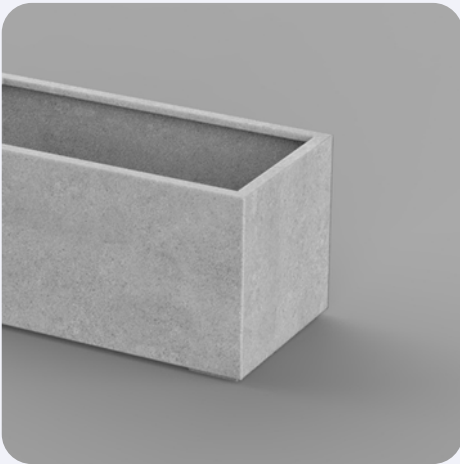


Exploda View



Include Lifting Points

Our Advantages



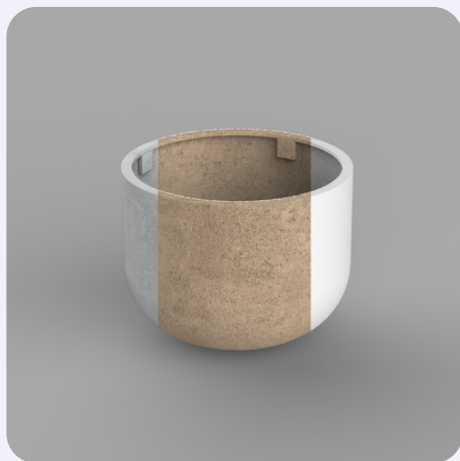
Material Options

Available in three substrate variations: Standard RC, Recycled RC, and Green RC. Catering to sustainability.



Efficient Logistics

Designed for optimised shipping and handling with nesting and stacking capabilities to maximise container loads.



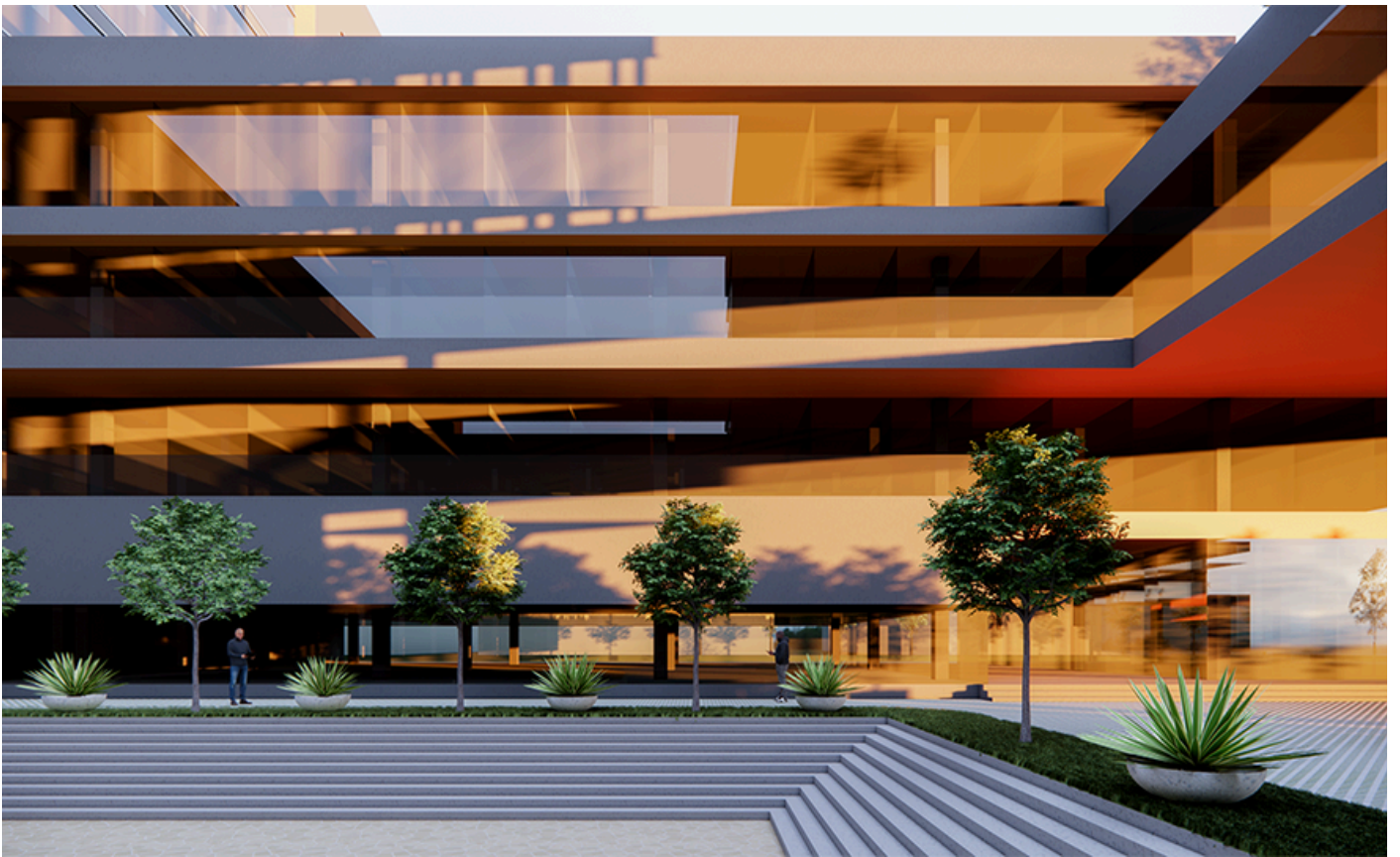
Colour Palette

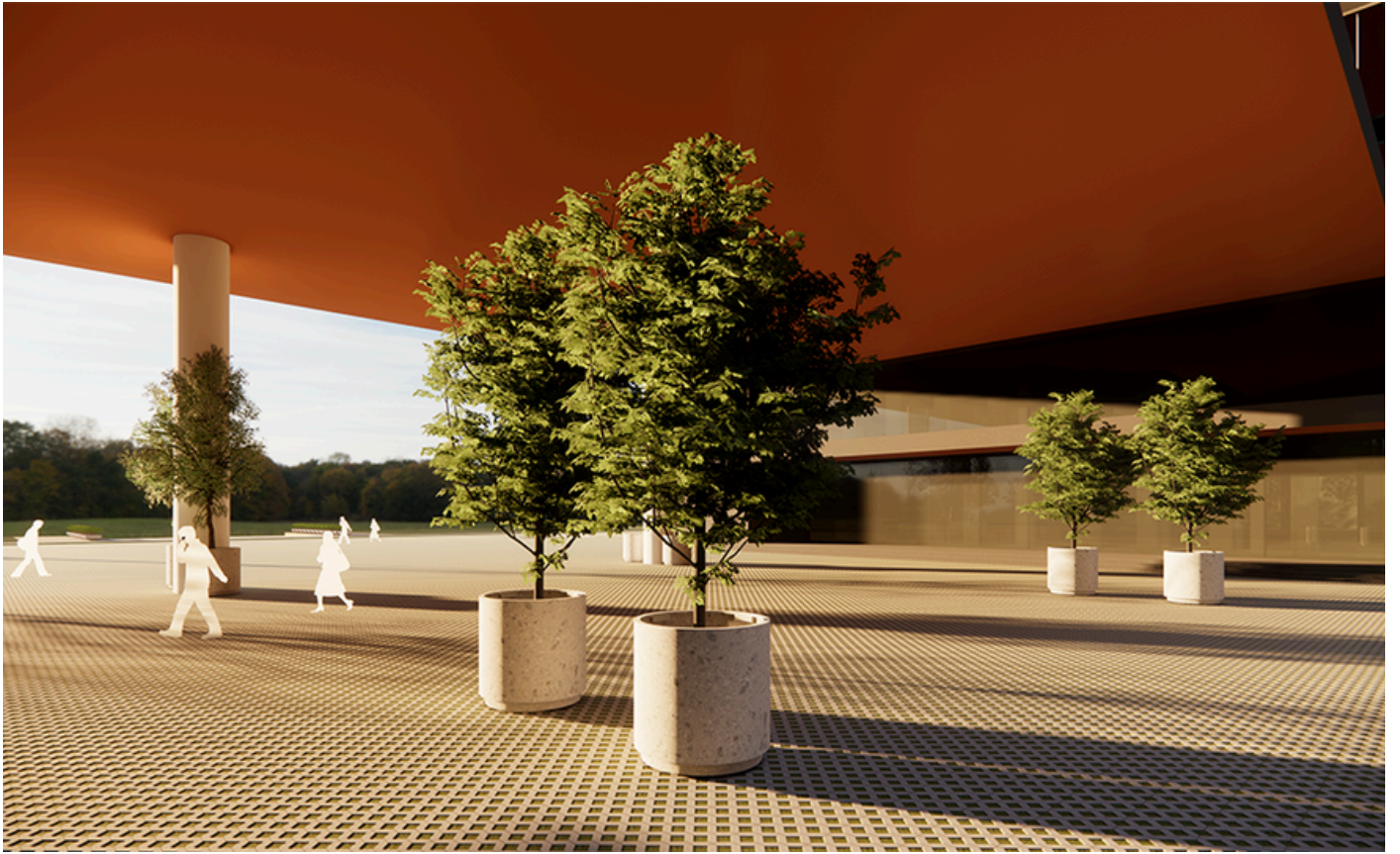
Offered in three architectural finishes: Cream, Sandstone, and Grey Concrete. Suitable for diverse design aesthetics.











Contact Us

Experienced Global Team,
Reliable Partner Assurance



BUSINESS DEVELOPMENT EXECUTIVE
Frank Rosselli

✉ frankr@shapeshift.tech
☎ +61 400 241 784
☎ +6173666 0007
🌐 shapeshift.tech



SALES & MARKETING EXECUTIVE
Zsolt Tomo

✉ zsoltt@shapeshift.tech
☎ +61 405 068 998
☎ +6173666 0007
🌐 shapeshift.tech



BUSINESS DEVELOPMENT LEAD
Sam Seewan

✉ sam@shapeshift.tech
☎ +61 433 553 329
☎ +6173666 0007
🌐 shapeshift.tech

get in touch for
more information

