

ShapeShift Standard Product Range

# Ballistic Wall Panel



# Bridging Creativity and Buildability

Over the past two decades, ShapeShift Technologies has built its reputation as the preferred partner for the world's leading architects, consultants, and Tier 1 builders, amassing a portfolio of over 320 landmark projects across 16 countries.

Through a vertically integrated design to manufacture process, ShapeShift delivers intelligent, sustainable, low-risk solutions by leveraging cutting-edge aerospace technology and precision manufacturing techniques at scale.

**25 Years**  
Experience



**16 Countries**



**372.000 sqm**  
Installed



**320**  
Projects



**Ballistic Wall Panel**

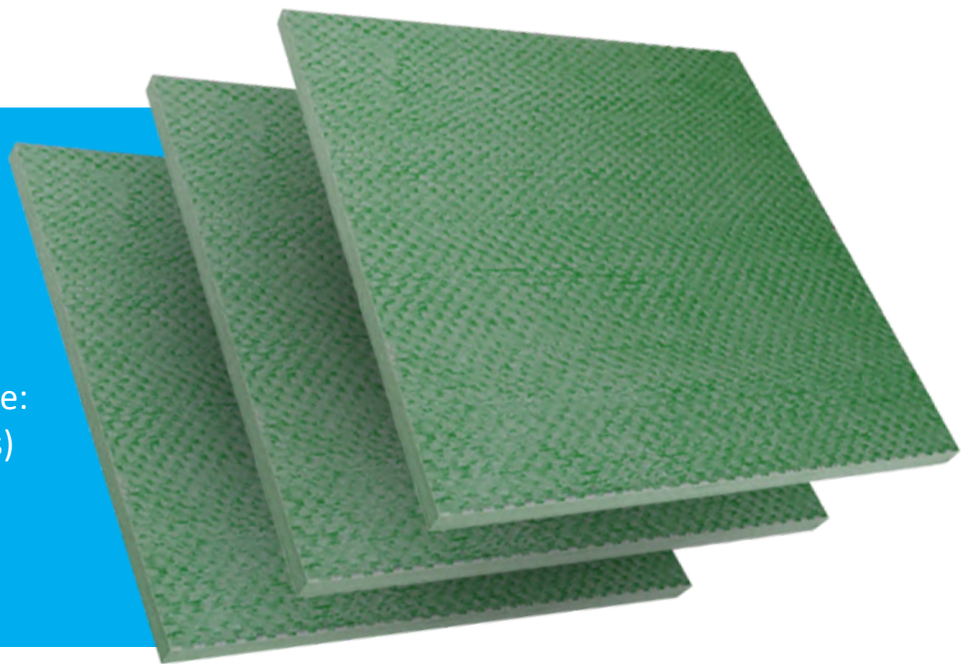


### Properties

Thickness:  
1 3/8" (35 mm)

Ballistic Performance:  
UL 572 Level 4 (Pass)

Substrate:  
ShapeShell™-RT



## Ballistic Wall Panel

Ballistic wall paneling is a protective material engineered to resist projectile penetration from firearms, providing safety against gunfire in critical infrastructures, government buildings, and commercial spaces. These panels are designed to absorb, deflect, or stop bullets while minimizing secondary effects such as spalling (fragmentation).

This protective solution is designed for high-security applications, integrating our ShapeShell™-RT (Reinforced Thermoset) substrate to deliver superior ballistic resistance, structural integrity, and architectural adaptability. Engineered to withstand high-caliber firearm threats while maintaining a lightweight, modular, and aesthetically versatile design, making it ideal for critical infrastructure, government buildings, corporate security, and military installations.

### Key Benefits

- **Multi-threat protection** (firearms, forced entry, blast resistance).
- **Lightweight & modular** (Easy to install, blend seamlessly, and retrofit)
- **Aesthetic integration** (Customizable finishes for discreet security)
- **Durable & low maintenance** (Fire-resistant, weatherproof, and corrosion-resistant)

# Applications

## Security & Defense

- Government & Military Facilities – Used in embassies, command centers, border checkpoints, and military bases to protect personnel and assets from firearm and explosive threats.
- Law Enforcement & Riot Control – Installed in police stations, detention centers, and riot shields, offering resistance against ballistic.

## Critical Infrastructure Protection

- Power & Utility Facilities – Protects electrical substations, power plants, and water treatment facilities from sabotage or terrorist attacks.
- Data Centers & Communication Hubs – Ensures physical security for sensitive information and critical IT infrastructure.

## Public Safety & Commercial Use

- Schools & Public Buildings – Provides active shooter protection in classrooms, hallways, and administrative offices.
- Banks & Financial Institutions – Bulletproof walls, counters, and partitions for teller stations and vaults.

## Transportation & Urban Safety





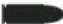

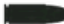

- Airports & Train Stations – Protects control rooms, baggage areas, and ticket counters from firearm threats.
- Border & Customs Security – Enhances checkpoints and guard booths to withstand potential attacks.

## Residential & Personal Protection

- Safe Rooms & Panic Rooms – Installed in homes, hotels, and luxury residences for high-profile individuals.
- Armored Vehicles – Used in military, police, and VIP transport to reinforce vehicle interiors.



# UL 752 Standard for Bullet-Resistant Materials Testing

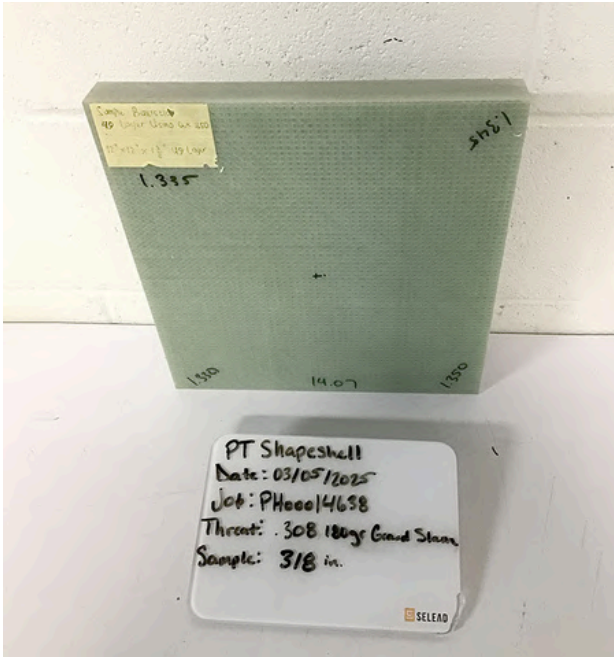
UL RATING	1	2	3	4
WEAPON	 9mm Pistol	 .357 Magnum Pistol	 .44 Magnum Pistol	 .30 Caliber Rifle
AMMUNITION	 9mm Full Metal Copper Jacket with Lead Core	 .357 Magnum Jacketed Lead Soft Point	 .44 Magnum Lead Semi-Wadcutter Gas Checked	 .30 Caliber Rifle Lead Core Soft Point
WEIGHT	124 grains 8 grams	158 grains 10.2 grams	240 grains 15.6 grams	180 grains 11.7 grams
VELOCITY	1175 FPS to 1293 FPS	1250 FPS to 1375 FPS	1350 FPS to 1485 FPS	2540 FPS to 2794 FPS
BALLISTIC MATERIAL APPROXIMATE THICKNESS	L1 Glazing 0.5" - 1.25" L1 Fiberglass 0.25" Armor Plate 0.25"	Glazing 0.75" - 1.375" Fiberglass 0.375" Armor Plate 0.25"	Glazing 1.25" Fiberglass 0.5" Armor Plate 0.25"	Glazing 1.5" Fiberglass 1.375" Armor Plate 0.25"

# Test Result

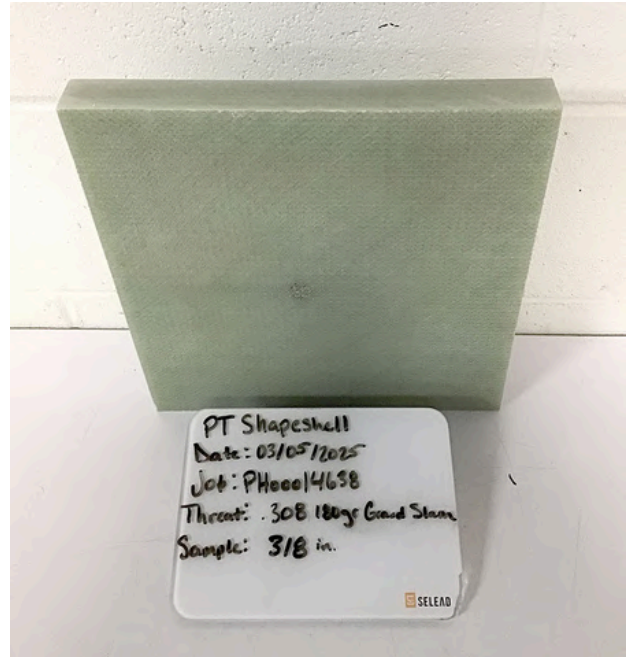
## Before Test

---

1 3/8" (35 mm) Thickness - Front



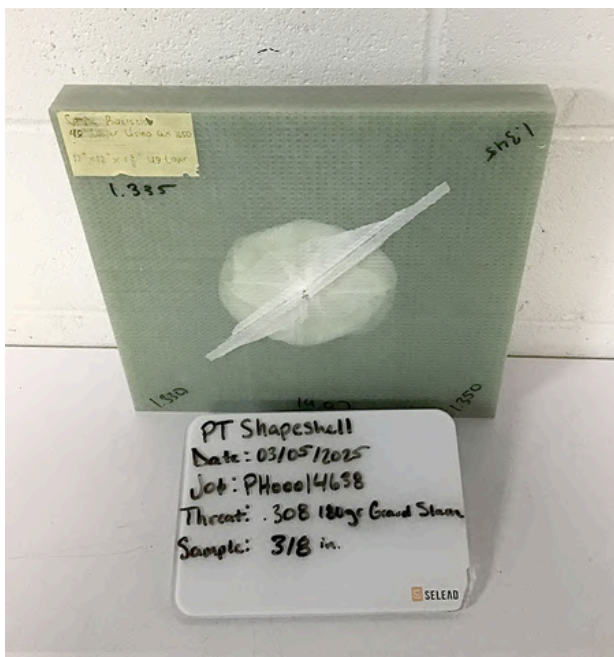
1 3/8" (35 mm) Thickness - Rear



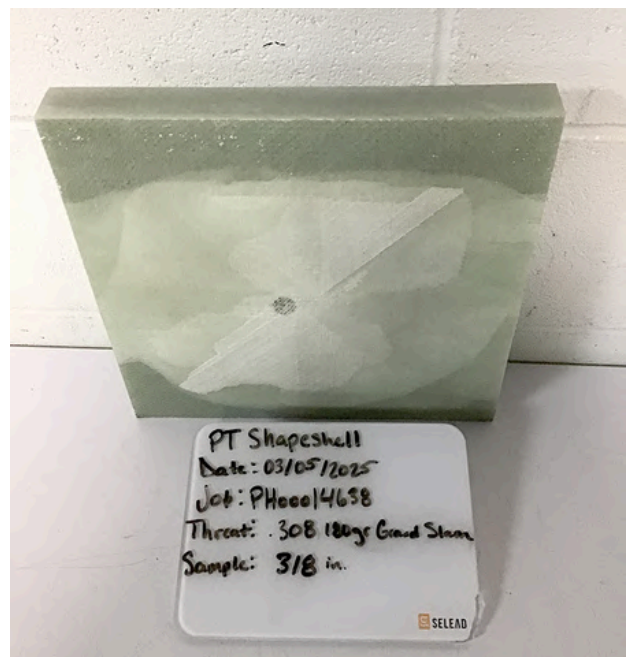
## After Test

---

1 3/8" (35 mm) Thickness - Front



1 3/8" (35 mm) Thickness - Rear

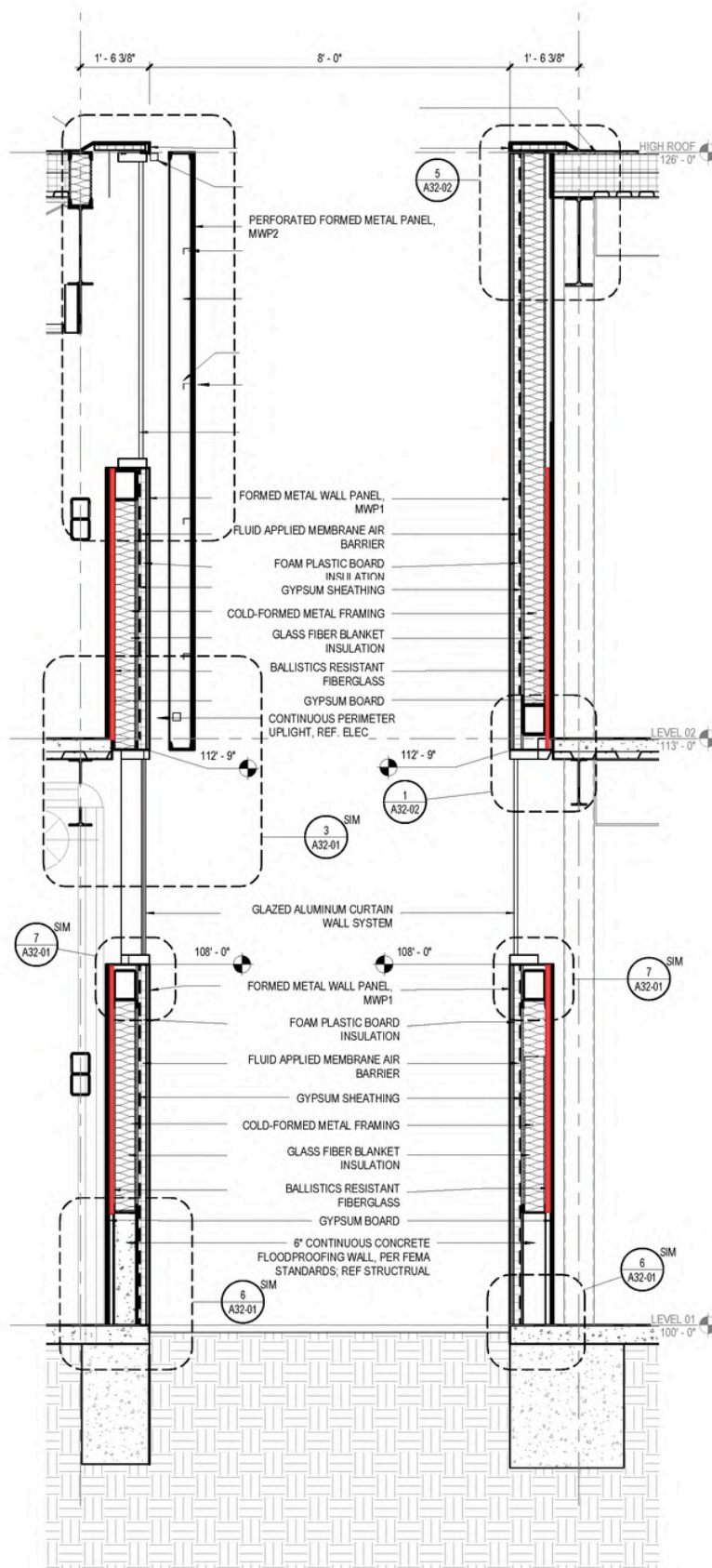




# Test Result

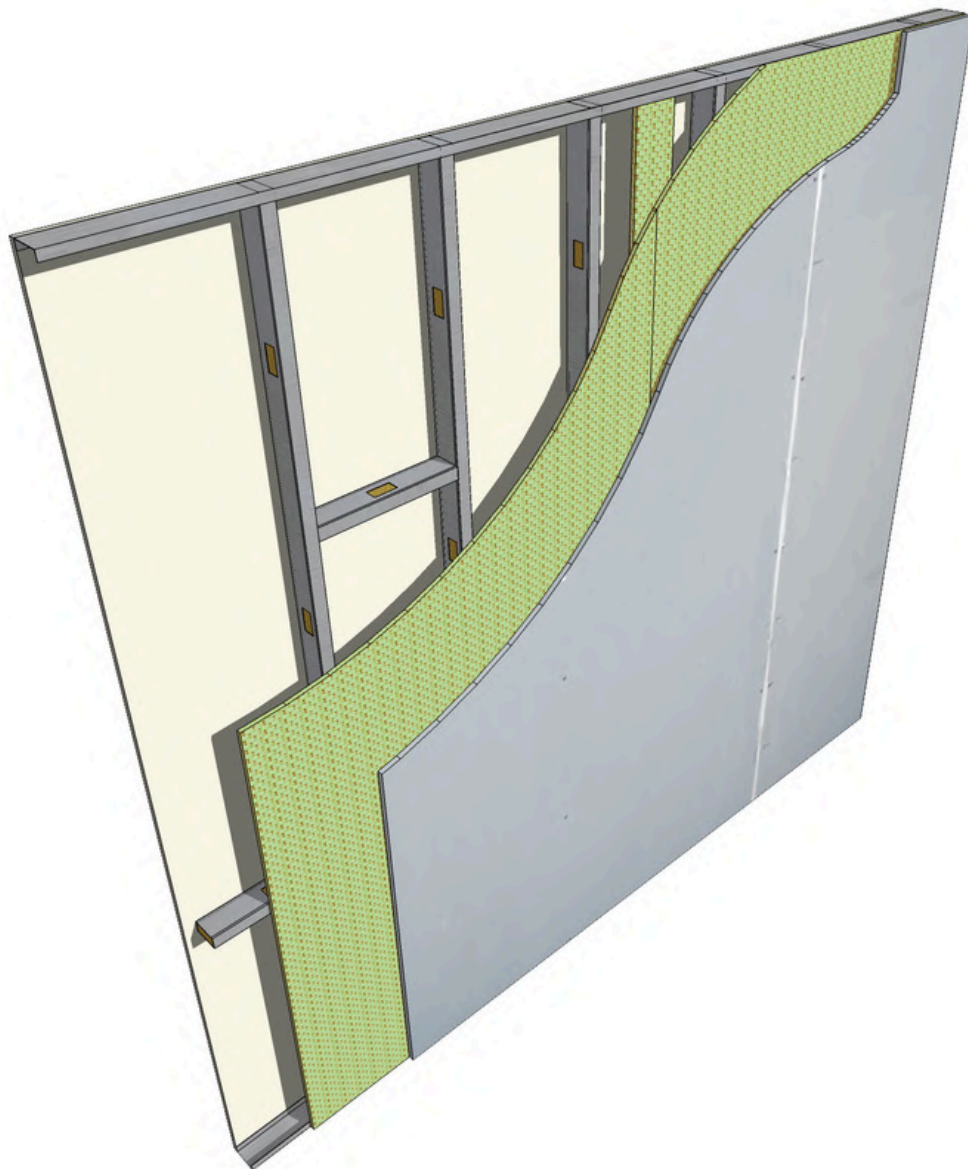
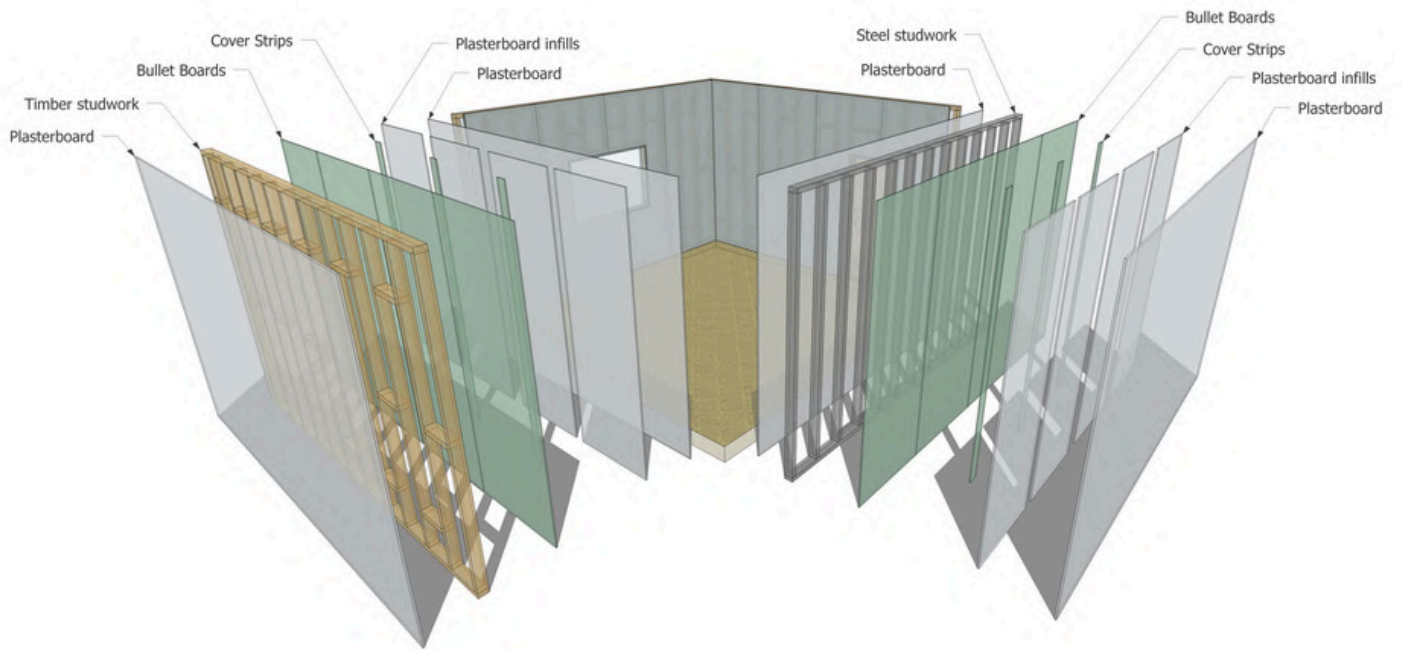
BALLISTIC RESISTANCE TEST											
<b>Element U.S. Space &amp; Defense-Belcamp</b> 4603B Compass Point Road Belcamp, MD 21017						Client: PT Shapeshell International Indonesia Project No.: PH00014638 Test Date: 03/05/2025 Page 1 of 1					
<b>Test Panel</b>		Description: Rigid armor.									
Manufacturer: PT Shapeshell International Indonesia						Sample No.: (.30 LCSP, V0) 1 3/8 in.					
Size: 12 x 12 in Avg. Thickness: 1.340 in Thicknesses: 1.330 in, 1.350 in, 1.335 in, 1.345 in				Weight: 14.070 lbs Plies/Laminates: N/A				Date Received: 02/25/2025 Received Via: FEDEX, Express Saver Returned Via: FEDEX, Express Saver			
<b>Setup</b>											
Shot Spacing: UL 752 Level 4 Witness Panel: .125 in Cardboard Backing Material: N/A Condition: Ambient				Primary Vel. Screens (ft): 5.000, 5.333, 9.666, 10.000 Primary Vel. Location (ft): 7.500 Range to Target (ft): 15.000 Target to Witness (in): 18.000				Range No.: Range 4 Temp: 71.5 °F BP: 30 inHg RH: 36 % Barrel/Gun: WC078639 Gunner: Adam Beach Recorder: Kyler Reisler			
<b>Ammunition</b>											
Projectile				Lot No.		Manufacturer			Powder		
(1) .308 cal, 180-grain Grand slam				NA		Speer			N133		
<b>Applicable Standards or Procedures</b>											
(1) UL 752 Level 4 (2) Customer Request											
Shot No.	Ammo	Powder/ Seating	Weight (gr)	Time 1 (µs)	Vel. 1 (ft/s)	Time 2 (µs)	Vel. 2 (ft/s)	Avg. Vel. (ft/s)	Penetration	Obliq. (°)	Footnotes
1	1	41.0	182	1857.0	2693	1610.0	2691	2692	None	0	
<u>Remarks:</u> Required velocity: 2540-2794 ft/s. Projectile yaw check: 0 degree yaw on all impacts.											
<u>Footnotes:</u> N/A											






#### 4 WALL SECTION

1/2" = 1'-0"





Experienced  
Global Team,  
Reliable Partner  
Assurance



## Contact Us

Get in touch today to explore  
partnership opportunities.  
[create@shapeshift.com](mailto:create@shapeshift.com)

---

**ShapeShift Technologies Pty Ltd**  
AUSTRALIA ASIA USA EUROPE  
<https://shapeshift.tech/>

